



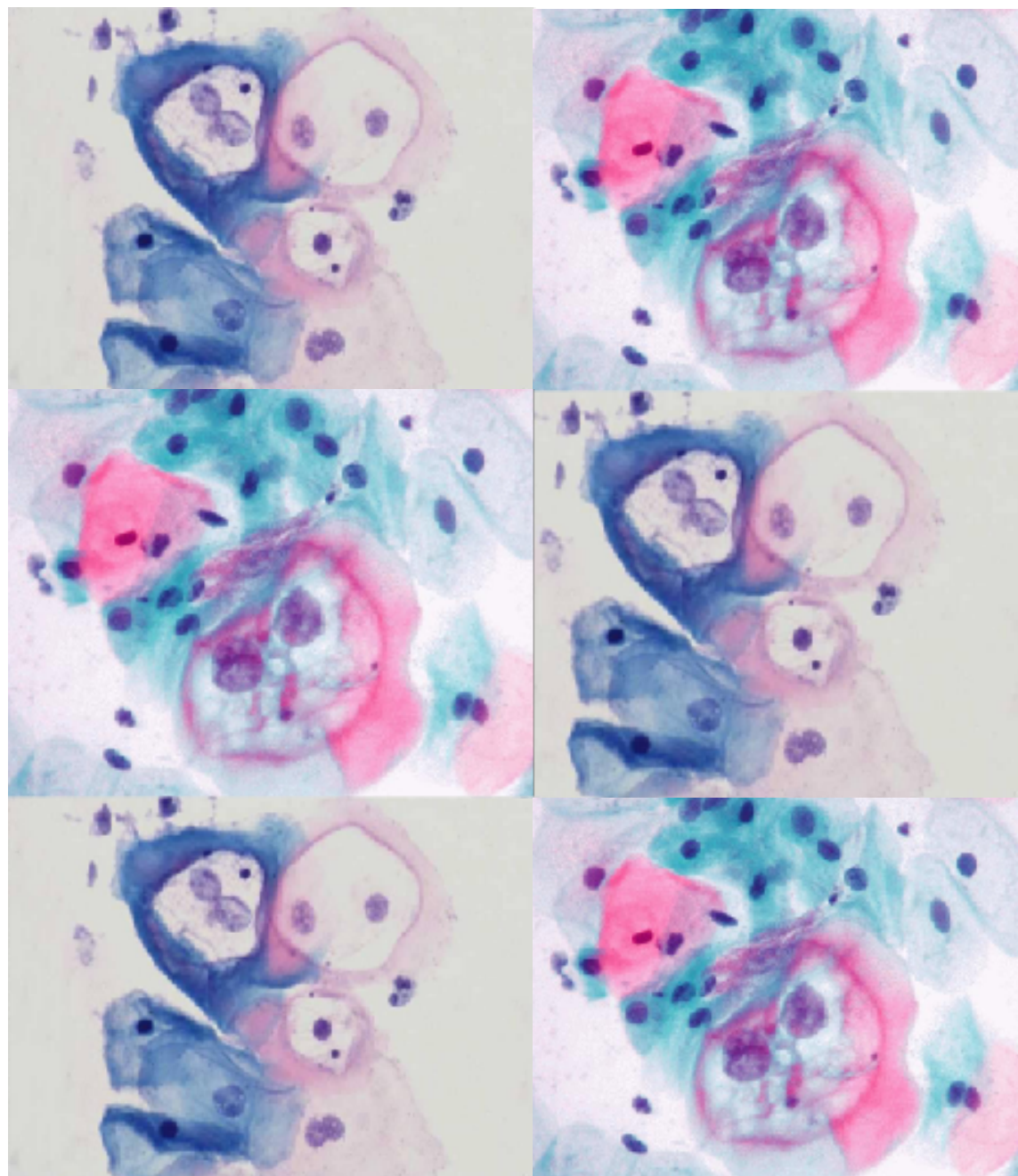
RIUNIONE ANNUALE SCREENING CERVICALE

Padova
5 dicembre 2017

Duilio Della Libera

UOC Anatomia Patologica - Feltre





Controllo di Qualita'

Aggiornamento operatori

Linee Guida

4

Laboratory Guidelines and Quality Assurance Practices for Cytology

4.7

Quality management

4.7.1

Internal quality management

4.7.1.1

Laboratory quality management (preanalytical quality management)

4.7.1.2

Analytical quality management (cytology)

4.7.1.3

Internal continuing education

4.7.2

External quality management

4.7.2.1

External continuing education

4.7.2.2

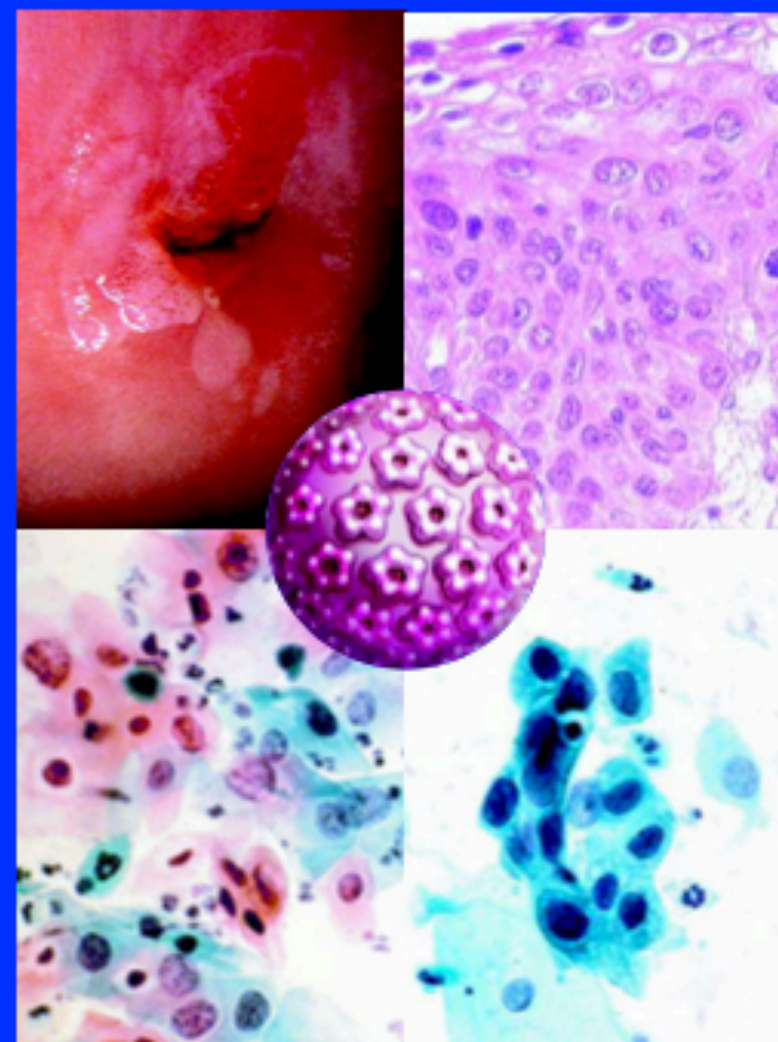
External quality control of screening skills

4.7.2.3

Accreditation of the laboratory unit

MD-19-02-117-EN-4

European guidelines for quality assurance in cervical cancer screening *Second Edition*



European guidelines for quality assurance
in cervical cancer screening *Second Edition*



European Commission

Quality Control and Quality Assurance Practices in Cervical Cytology

Quality Assurance (QA) is defined by the College of American Pathologists as systematic monitoring of quality control results and quality practice parameters to assure that all systems are functioning in a manner appropriate to excellence in health care delivery.

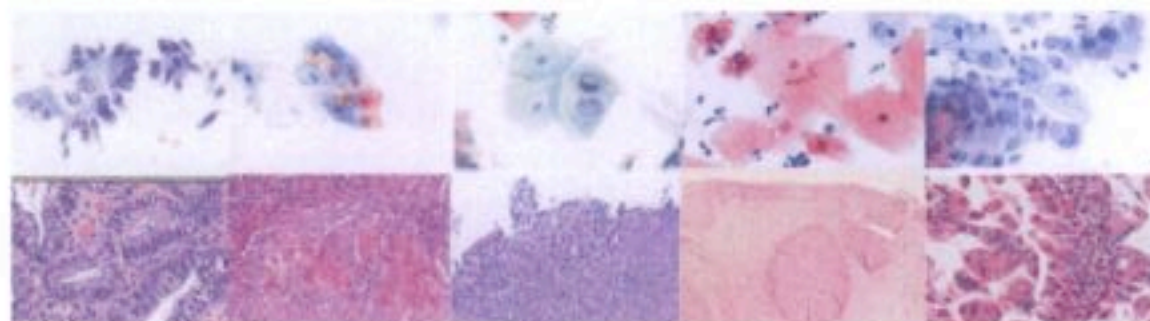
- ▶ *Pre-analytical Quality Control*
- ▶ *Screening and Reporting of Gynecologic Specimens*
- ▶ *Review of Abnormal Gynecologic Cases*
- ▶ *Rescreening of Negative Cases*
- ▶ *Cytology-Histology Correlation and Clinical Follow Up*
- ▶ *Retrospective Reviews*
- ▶ *Measures of Screening*
- ▶ *Performance*
- ▶ *Proficiency Testing and Continuing Medical Education*
- ▶ *Internal periodical quality control procedures*
- ➡ **External quality control**





Controllo della qualità in citologia e
istologia nello screening del carcinoma
della cervice uterina

ANALISI DELLA CONCORDANZA



Castelfranco Veneto 6, 13 Maggio 2005



Castelfranco Veneto, 17/18/19/20/21 Gennaio																					
RISULTATI LETTURA CITOLOGICA - ULSS																					
err																					
CASO	18	3	9	5	4	17	6	2	13	19	15	VR	16	1	12	21	7	22	8	D RIF	D ULSS
1	6,2	6,3	6,2	6,1	6,1	6,2	6,2	6,3	5,2	?	6,2	6,1	5,1	1+6,	6,2	6,2	6,1	5,2	6,3	6,3	6,3
2	6,2	6,2	6,2	1,1	5,3	6,2	1	6,2	5,3	6,2	5,2	6,2	5,2	5,1	5,1	6,2	6,2	5,2	5,3	6,2	6,2
3	1,2	1,2	1,2	1,2	2,2	1,2	1,2	1,2	1,2	1,2	1,2	1,2	1,2	1	1,2	1,2	1,2	1,2	1,2	1,2	1,2
4	4	2,2	4	4	4	2,2	4	3	2,1	4	3	4	4	4	2,2	4	4	4	4	4	4
5	3	3	4	4	4	3	4	2,2	3	4	4	4	4	4	4	4	4	4	4	4	4
6	6,1	2,2	4	4	6,3	5,2	6,1	2,2	5,2	5,3	5,1	6,1	4	6,1	5,1	4	4	4	4	4	4
7	2,1	3	3	1,2	4	2,1	1,2	1,2	1,2	1,2	1,2	1	5,1	3	2,1	6	4+5,3	2,1	4+5,2	4+5,2	4+5,2
8	1,1	2,2	3	4	4	3	2,2	1,2	3	2,1	3	4	2,2	3	2,1	4	4	3	4	4	2,2
9	3	2,2	4	4	4	3	4	2,1	3	2,2	2,2	3	2,2	3	4	4	4	4	4	4	2,2
10	1,1	2,1	1	2,1	4	2,1	2,1	2,2	2,1	3	2,1	3	2,2	4	2,1	4	4	2,1	4	4	2,1
11	1,1	5,1	1	1,2	2,2	1,2	2,1	2,1	1	2,2	1,2	2,1	2,1	4	1,1	2,2	4	5,1	2,2	4	1,2
12	1,2	2,1	5,1	1,2	2,1	1,2	1,2	5,1	1,2	6,2	1,2	1,2	1,2	5,1	1,2	6,2	1,2	2,2	1,2	1,2	1,2
13	3	2,2	3	3	4	3	4	3	3	3	4	4	4	3	3	4	4	3	4	4	4
14	3	2,2	2,2	2,2	3	3	3	3	2,2	5,1	2,1	2,2	2,1	3	1,2	3	4	1	2,2	4	2,2
15	5,3	5,2	5,3	5,2	4+5,3	4	6,1	5,1	5,3	5,2	6,2	5,3	6,2	1,2+6,	5,1	4	4+5,3	5,1	6,2	4+5,2	4+5,2
16	6,1	6,1	6,1	6,1	6,1	6,1	6,1	6,1	6,1	4	6,1	6,1	4	6,1	2,2	6,1	6,1	4	6,1	6,1	6,1
17	5	6,3	6,2	2,2	6,2	5,1	5,1	5,2	5,2	5,1	5,2	5,1	5,1	6,2	1,2	5,2	5,1	5,2	6,2	5,2	5,2
18	3	3	3	3	3	3	3	3	3	3	3	4	3	3	3	3	3	3	3	3	3
19	6,1	4	4	6,1	4	5,3	4	3	4	4	4+5,1	6,1	4	6,2	4	4	4	4	4	4	4
20	6,3	5,2	5,2	6,1	6,2	6,2	6,2	6,2	6,3	6,2	6,2	6,2	6,2	6,2	3-1-2,	5,3	6,3	6,3	5,2	6,3	5,2
21	6,1	6,1	4	4	4	4	4	4	4	4	4	6,1	4	4	6,1	4	4	4	4	4	4
22	4	4	6,1	4	6,2	4	2,2	4	4	6,3	4	4	4	6,1	5,3	6,1	6,2	6,1	6,2	6,2	6,2
23	3	2,2	3	3	3	3	3	3	3	3	3	3	3	3	3	3	3	3	3	3	3
24	6,2	5,2	5,3	6,2	6,2	5,2	5,2	5,2	6,2	5,3	5,2	5,3	5,3	5,3	5,2	5,1	5,3	5,1	5,3	5,3	5,3
25	5,3	5,3	5	4	6,2	5,2	5,1	5,2	5,2	5,3	5,2	5,3	5,2	6,2	5,1	5,2	5,3	5,2	6,2	5,3	5,3
26	2,1	2,1	2,2	2,2	4	1,2	2,1	3	1,2	2,1	1,2	2,1	2,1	1	2,1	2,1	4	2,2	2,2	4	3
27	6,1	6,1	4	6,1	4	4	6,1	4	4	6,1	4	6,1	4	4	4	6,1	4	4	4	4	4
28	6,2	6,3	4	6,1	6,2	4	6,1	5,1	5,2	4	5,3	1	5,3	4	6,3	6,2	6,2	4	6,2	5,3	4
29	3	3	3	3	3	3	3	3,2	3	3	2,1	3	3	3	3	3	3	3	3	3	3
30	2,2	4	2,2	1,1	4	2,2	2,2	2,1	2,1	3	2,2	2,1	4	4	2,2	2,2	4	4	2,2	4	2,2
31	4	4	4	4	4	4	4	4	3	4	4	4	4	4	4	4	4	4	4	4	4
32	5,2	5,2	5	1,2	6,2	5,2	5,1	1,2	5,1	5,1	5,1	5,3	5,1	6,2	2,2	5,2	6,2	5,2	6,2	6,2	6,2
33	1,1	1,2	1,2	1,2	1,2	1,2	1,1	1,2	1,2	1	1,1	1,2	1,1	1	1,1	1,1	1,1	1,2	1	1,2	1,2
34	6,2	6,2	5,3	5,2	5,3	4	4	5,3	5,3	5,1	5,1	6,1	5,2	5,3	2,2	5	5,3	5,2	5,3	5,3	5,3
35	6,3	6,2	6,2	4	6,2	6,2	5,2	5,2	5,2	6,2	6,3	6,1	6,2	6,2	2,1	6,2	6,2	5,2	4,2	6,2	5,2

19 centri
35 casi



Regione del Veneto
Istituto Oncologico Veneto
Istituto di Ricovero e Cura a Carattere Scientifico



Gruppo Regionale Veneto dei Patologi dello Screening Citologico
Confronto interistituzionale in
patologia cervico-vaginale da screening
Rovigo, 27 novembre 2009
AULA MAGNA "Cittadella Socio-Sanitaria" ULSS 18

8 anni di esperienza

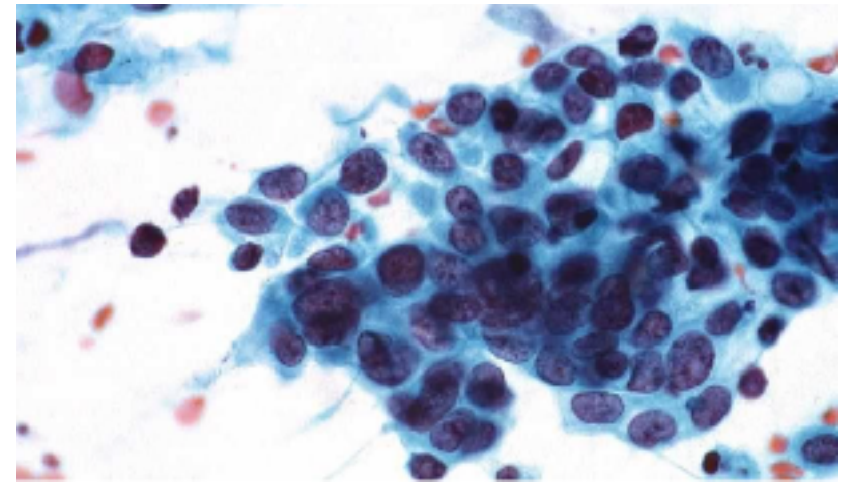
2009-2012 discussione casi «a soggetto»

2013-2016 casi concordanza e casi istruttivi

2017

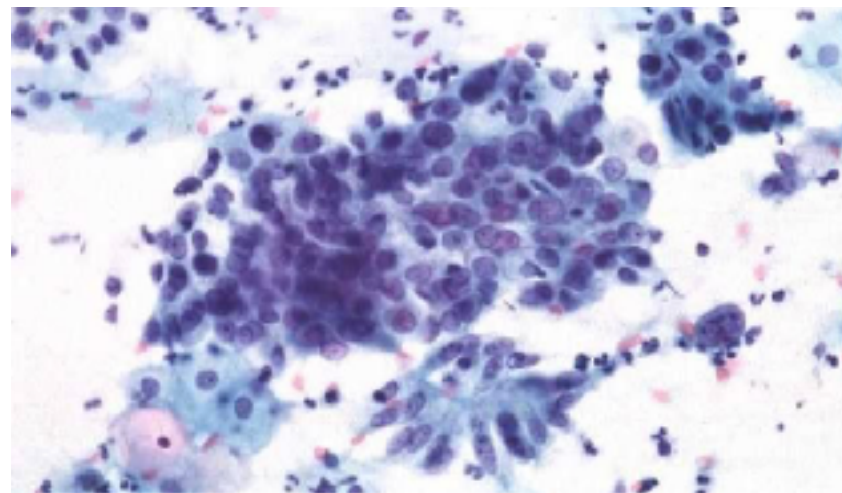
Set casi concordanza

Competenza operatori



Set casi istruttivi

Complessita' diagnostica



Fare la cosa giusta nel modo sbagliato ...



AMERICAN PUZZLE CARDS.

Copyright 1880.



FIND THE DOG'S MASTER.

(Over.)



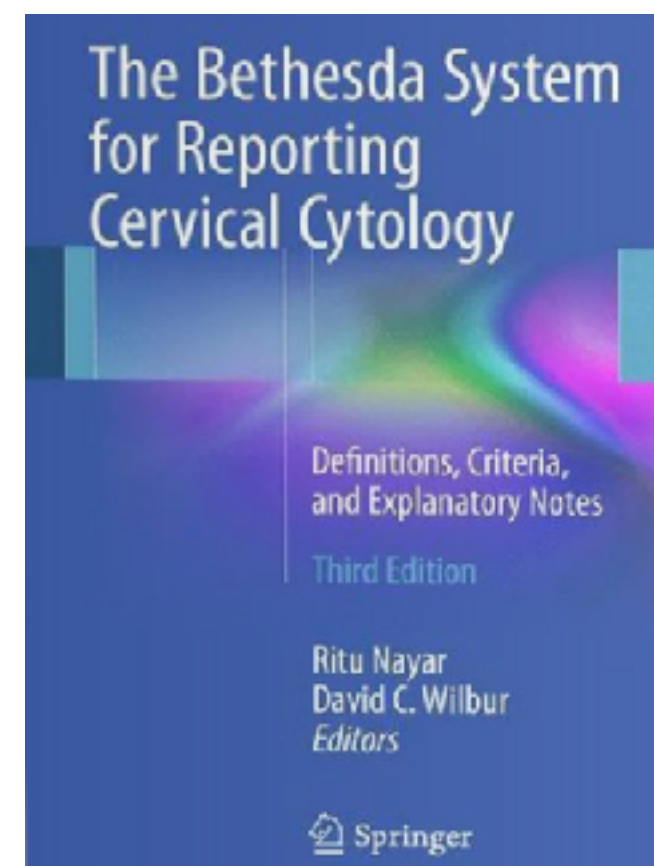
ACTA
CYTOLOGICA

Review

Acta Cytologica 2015;59:121-132
DOI: 10.1159/000381842

The Pap Test and Bethesda 2014

*"The reports of my demise have been greatly exaggerated."
(after a quotation from Mark Twain)*





Registro Tumori del Veneto
Gruppo regionale veneto dei patologi dello screening citologico

CONFRONTO INTERISTITUZIONALE IN PATOLOGIA CERVICO-VAGINALE DA SCREENING

Rovigo, 9 novembre 2017
Aula Magna Cittadella Socio-Sanitaria

9-19-81 *Atl. Journal-Constitution*

Wealth Of Disagreement Marks Discussion About Gold Standard

From Press Dispatches

WASHINGTON — A 17-member government commission Friday began considering whether the nation should return to some form of gold standard, and found after four hours that the issues are slippery and complex.

"We can't even agree on the historical facts," Treasury Secretary Donald Regan, who presided, told reporters later.

Commission counsel Anna Schwartz presented a history of the role gold has played in American monetary development. Even that history led quickly to controversy.

"The weight of the evidence suggests none of the automatic systems, the rigid systems (such as a direct gold standard) has performed satisfactorily," said Federal Reserve Governor Emmett J. Rice.

Businessman Lewis Lehrman, one of the leading "gold bugs" mentioned that "I must deny the assertion of Gov. Rice." He said the evidence in Mr. Schwartz's report indicated strongly that under all U.S. gold systems "price stability was better than in the past 16 years."

About the only thing its members could agree on was that they need more time to study the issue before making a recommendation to Congress. They split up an 8-8 vote on just how much more time was needed.

Two things did seem clear by the end of the day, however:

- The 17 commission members be-

lieve inflation must be fought by some means, whether it be by monetary control as directed by the Federal Reserve Board or by tying U.S. currency to gold in some way.

• The deliberations and final recommendations of the commission will be watched with interest by President Reagan, who praised the gold standard in the past.

Reagan "probably has a slight bias toward gold and its disciplines, but he's not committed to a gold standard," Treasury Secretary Regan told reporters after the commission meeting.

The basic argument of gold-standard backers is that such a tie would hold down growth of the nation's money supply and therefore fight inflation.

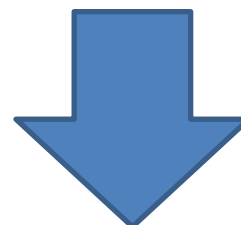
Opponents say the nation should not relinquish control of its monetary policy to the unthinking supply of gold and risk the financial mischief that big gold producers such as the Soviet Union and South Africa might cause.

Under the law that created the commission, members are to make their recommendations to Congress by Oct. 7 — a date they agreed was no longer realistic.

But in the only vote they took Friday, the commission members found it almost impossible to even agree on what extension to request — eight voting for next March 31, eight for June 30.

One member, Rep. Henry Reuss, D-Wis., said later in the meeting that the absent member, Sen. Christopher Dodd, D-Conn., wanted to vote by phone for March 31. But the extension, assuming one is granted, will still be up to Congress.

For the most part, the United States went off the gold standard in 1933. However, the nation continued to allow foreign visitors to convert dollars into gold in the United States until 1971, when the government under former President Nixon closed that "gold window."



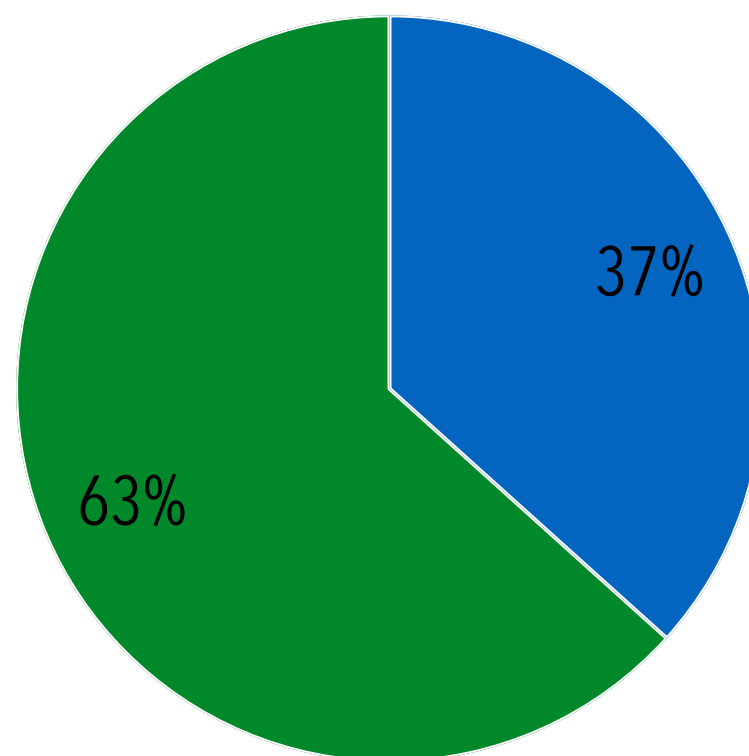
DIAGNOSI DI CONCORDANZA

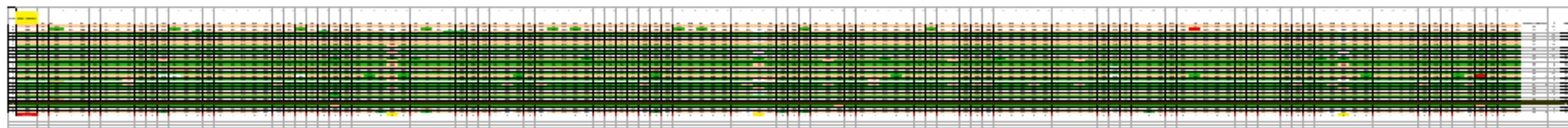


30 PAPTEST VIRTUALI
(SCREENING – 1° LIVELLO)



● TRADIZIONALI ● THINPREP





24 Centri

(18 ULSS, 2 extraVeneto, 4 centri privati)

103 Lettori

3090 Diagnosi

CASO	GOLD STANDARD	1	2	3	4	5
1	LSIL	LSIL	LSIL	LSIL	LSIL	LSIL
2	NEG	NEG	NEG	NEG	NEG	NEG
3	LSIL	LSIL	LSIL	LSIL	LSIL	LSIL
4	HSIL	HSIL	HSIL	HSIL	HSIL	HSIL
5	NEG	NEG	NEG	NEG	NEG	NEG
6	LSIL	LSIL	LSIL	LSIL	LSIL	LSIL
7	LSIL	LSIL	LSIL	LSIL	LSIL	LSIL
8	HSIL	HSIL	HSIL	HSIL	HSIL	HSIL
9	NEG	NEG	NEG	NEG	NEG	NEG
10	HSIL	HSIL	HSIL	HSIL	HSIL	HSIL
11	NEG	NEG	NEG	NEG	NEG	NEG
12	LSIL	LSIL	LSIL	LSIL	LSIL	LSIL
13	HSIL	HSIL	HSIL	HSIL	HSIL	HSIL
14	HSIL	HSIL	HSIL	HSIL	HSIL	HSIL
15	LSIL	LSIL	LSIL	LSIL	LSIL	LSIL
16	NEG	NEG	NEG	NEG	NEG	NEG
17	HSIL	HSIL	HSIL	HSIL	HSIL	HSIL
18	LSIL	LSIL	LSIL	LSIL	LSIL	LSIL
19	HSIL	HSIL	HSIL	HSIL	HSIL	HSIL
20	NEG	NEG	NEG	NEG	NEG	NEG
21	HSIL	HSIL	HSIL	HSIL	HSIL	HSIL
22	HSIL	HSIL	HSIL	HSIL	HSIL	HSIL
23	NEG	NEG	NEG	NEG	NEG	NEG
24	LSIL	LSIL	LSIL	LSIL	LSIL	LSIL
25	HSIL	HSIL	HSIL	HSIL	HSIL	HSIL
26	NEG	NEG	NEG	NEG	NEG	NEG
27	HSIL	HSIL	HSIL	HSIL	HSIL	HSIL
28	NEG	NEG	NEG	NEG	NEG	NEG
29	LSIL	LSIL	LSIL	LSIL	LSIL	LSIL
30	LSIL	LSIL	LSIL	LSIL	LSIL	LSIL
31	LSIL	LSIL	LSIL	LSIL	LSIL	LSIL
32	LSIL	LSIL	LSIL	LSIL	LSIL	LSIL
33	LSIL	LSIL	LSIL	LSIL	LSIL	LSIL
34	LSIL	LSIL	LSIL	LSIL	LSIL	LSIL
35	LSIL	LSIL	LSIL	LSIL	LSIL	LSIL
36	LSIL	LSIL	LSIL	LSIL	LSIL	LSIL
37	LSIL	LSIL	LSIL	LSIL	LSIL	LSIL
38	LSIL	LSIL	LSIL	LSIL	LSIL	LSIL
39	LSIL	LSIL	LSIL	LSIL	LSIL	LSIL
40	LSIL	LSIL	LSIL	LSIL	LSIL	LSIL
41	LSIL	LSIL	LSIL	LSIL	LSIL	LSIL
42	LSIL	LSIL	LSIL	LSIL	LSIL	LSIL
43	LSIL	LSIL	LSIL	LSIL	LSIL	LSIL
44	LSIL	LSIL	LSIL	LSIL	LSIL	LSIL
45	LSIL	LSIL	LSIL	LSIL	LSIL	LSIL
46	LSIL	LSIL	LSIL	LSIL	LSIL	LSIL
47	LSIL	LSIL	LSIL	LSIL	LSIL	LSIL
48	LSIL	LSIL	LSIL	LSIL	LSIL	LSIL
49	LSIL	LSIL	LSIL	LSIL	LSIL	LSIL
50	LSIL	LSIL	LSIL	LSIL	LSIL	LSIL
51	LSIL	LSIL	LSIL	LSIL	LSIL	LSIL
52	LSIL	LSIL	LSIL	LSIL	LSIL	LSIL
53	LSIL	LSIL	LSIL	LSIL	LSIL	LSIL
54	LSIL	LSIL	LSIL	LSIL	LSIL	LSIL
55	LSIL	LSIL	LSIL	LSIL	LSIL	LSIL
56	LSIL	LSIL	LSIL	LSIL	LSIL	LSIL
57	LSIL	LSIL	LSIL	LSIL	LSIL	LSIL
58	LSIL	LSIL	LSIL	LSIL	LSIL	LSIL
59	LSIL	LSIL	LSIL	LSIL	LSIL	LSIL
60	LSIL	LSIL	LSIL	LSIL	LSIL	LSIL
61	LSIL	LSIL	LSIL	LSIL	LSIL	LSIL
62	LSIL	LSIL	LSIL	LSIL	LSIL	LSIL
63	LSIL	LSIL	LSIL	LSIL	LSIL	LSIL
64	LSIL	LSIL	LSIL	LSIL	LSIL	LSIL
65	LSIL	LSIL	LSIL	LSIL	LSIL	LSIL
66	LSIL	LSIL	LSIL	LSIL	LSIL	LSIL
67	LSIL	LSIL	LSIL	LSIL	LSIL	LSIL
68	LSIL	LSIL	LSIL	LSIL	LSIL	LSIL
69	LSIL	LSIL	LSIL	LSIL	LSIL	LSIL
70	LSIL	LSIL	LSIL	LSIL	LSIL	LSIL
71	LSIL	LSIL	LSIL	LSIL	LSIL	LSIL
72	LSIL	LSIL	LSIL	LSIL	LSIL	LSIL
73	LSIL	LSIL	LSIL	LSIL	LSIL	LSIL
74	LSIL	LSIL	LSIL	LSIL	LSIL	LSIL
75	LSIL	LSIL	LSIL	LSIL	LSIL	LSIL
76	LSIL	LSIL	LSIL	LSIL	LSIL	LSIL
77	LSIL	LSIL	LSIL	LSIL	LSIL	LSIL
78	LSIL	LSIL	LSIL	LSIL	LSIL	LSIL
79	LSIL	LSIL	LSIL	LSIL	LSIL	LSIL
80	LSIL	LSIL	LSIL	LSIL	LSIL	LSIL
81	LSIL	LSIL	LSIL	LSIL	LSIL	LSIL
82	LSIL	LSIL	LSIL	LSIL	LSIL	LSIL
83	LSIL	LSIL	LSIL	LSIL	LSIL	LSIL
84	LSIL	LSIL	LSIL	LSIL	LSIL	LSIL
85	LSIL	LSIL	LSIL	LSIL	LSIL	LSIL
86	LSIL	LSIL	LSIL	LSIL	LSIL	LSIL
87	LSIL	LSIL	LSIL	LSIL	LSIL	LSIL
88	LSIL	LSIL	LSIL	LSIL	LSIL	LSIL
89	LSIL	LSIL	LSIL	LSIL	LSIL	LSIL
90	LSIL	LSIL	LSIL	LSIL	LSIL	LSIL
91	LSIL	LSIL	LSIL	LSIL	LSIL	LSIL
92	LSIL	LSIL	LSIL	LSIL	LSIL	LSIL
93	LSIL	LSIL	LSIL	LSIL	LSIL	LSIL
94	LSIL	LSIL	LSIL	LSIL	LSIL	LSIL
95	LSIL	LSIL	LSIL	LSIL	LSIL	LSIL
96	LSIL	LSIL	LSIL	LSIL	LSIL	LSIL
97	LSIL	LSIL	LSIL	LSIL	LSIL	LSIL
98	LSIL	LSIL	LSIL	LSIL	LSIL	LSIL
99	LSIL	LSIL	LSIL	LSIL	LSIL	LSIL
100	LSIL	LSIL	LSIL	LSIL	LSIL	LSIL

☒ 8 NEGATIVI
☒ 12 LSIL
☒ 10 HSIL

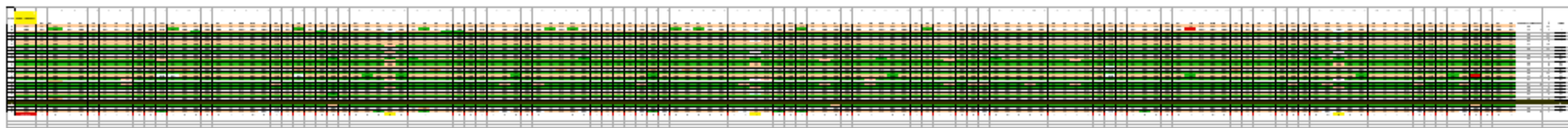
	2013	2014	2015	2016	2017
Centri	26	28	33	24	24
Lettori	115	117	129	127	103
Diagnosi	3450	3510	3780	3810	3090

	GOLD STANDARD	CORRETTE	SBAGLIATE	%
Caso 1- Pap-test	LSIL	103	0	100
Caso 2- Pap-test	NEG	103	0	100
Caso 3- Pap-test	NEG	100	3	97
Caso 4- Pap-test	HSIL	103	0	100
Caso 5- Pap-test	HSIL	103	0	100
Caso 6- Pap-test	NEG	103	0	100
Caso 7- Pap-test	LSIL	102	1	99
Caso 8- Pap-test	HSIL	102	1	99
Caso 9- Pap-test	NEG	101	2	98
Caso 10- Pap-test	LSIL	103	0	100
Caso 11- Pap-test	NEG	100	3	97
Caso 12- Pap-test	LSIL	99	4	96
Caso 13- Pap-test	NEG	102	1	99
Caso 14- Pap-test	LSIL	100	3	97
Caso 15- Pap-test	HSIL	102	1	99
Caso 16- Pap-test	HSIL	102	1	99
Caso 17- Pap-test	LSIL	101	2	98
Caso 18- Pap-test	HSIL	103	0	100
Caso 19- Pap-test	HSIL	101	2	98
Caso 20- Pap-test	LSIL	100	3	97
Caso 21- Pap-test	HSIL	101	2	98
Caso 22- Pap-test	LSIL	100	3	97
Caso 23- Pap-test	HSIL	102	1	99
Caso 24- Pap-test	LSIL	100	3	97
Caso 25- Pap-test	NEG	102	1	99
Caso 26- Pap-test	LSIL	102	1	99
Caso 27- Pap-test	NEG	102	1	99
Caso 28- Pap-test	LSIL	102	1	99
Caso 29- Pap-test	HSIL	102	1	99
Caso 30- Pap-test	LSIL	79	24	76

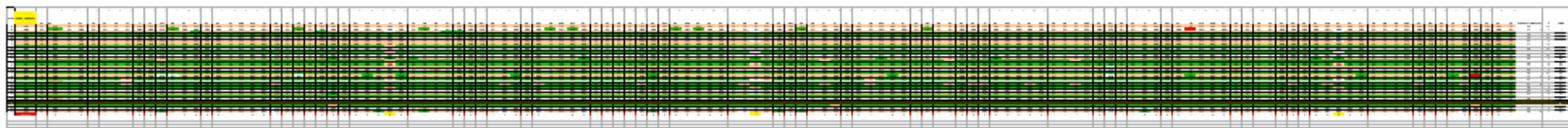
☒ 3 opzioni diagnostiche

☒ diagnosi "inequivocabili"

☒ Eliminato il caso 30 per " eccesso di discordanze "

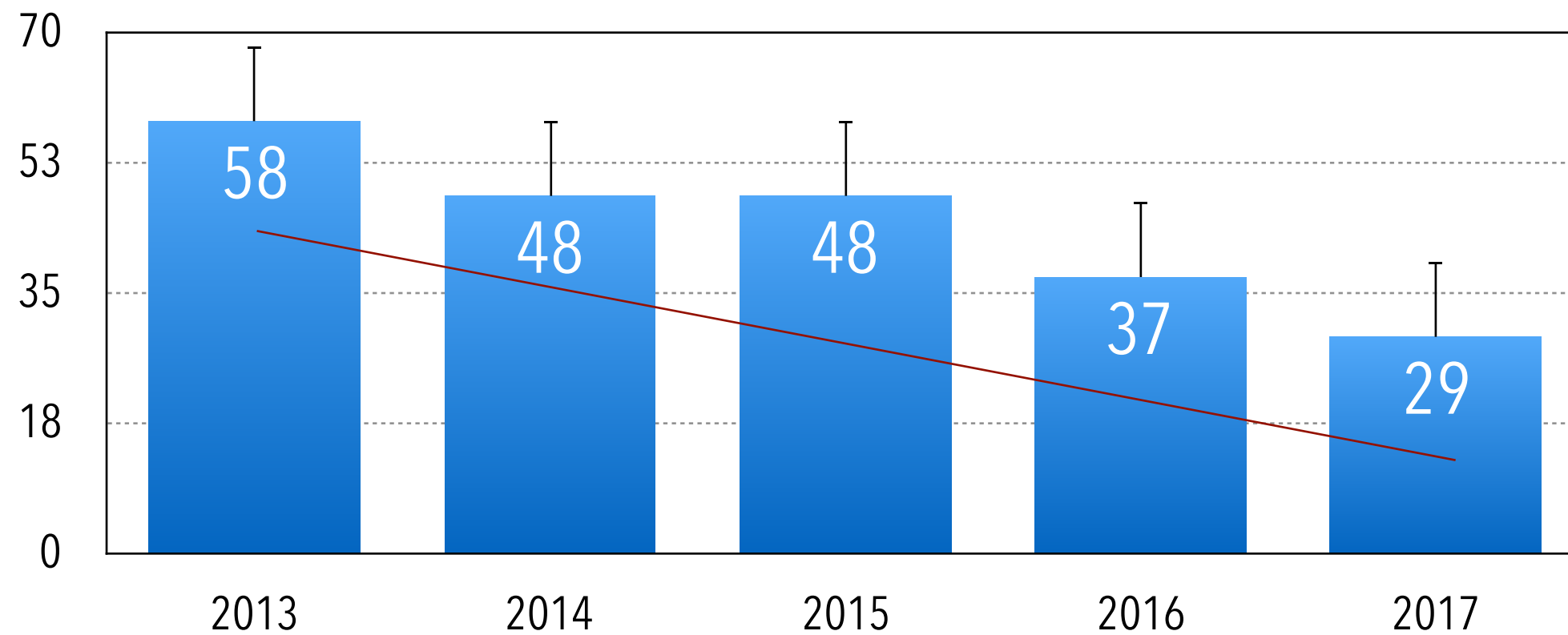


73 Lettori (71%)
nel 2016 63%
100% Concordanza



30 Lettori (29%)
Discordanza

Percentuale di discordanza (errore)



103 CITOLOGI vs 30 PAP-TEST VIRTUALI vs 3090 DIAGNOSI



VISUALE STATISTICA VERSO LA DIAGNOSI

VISUALE STATISTICA VERSO I CITOLOGI

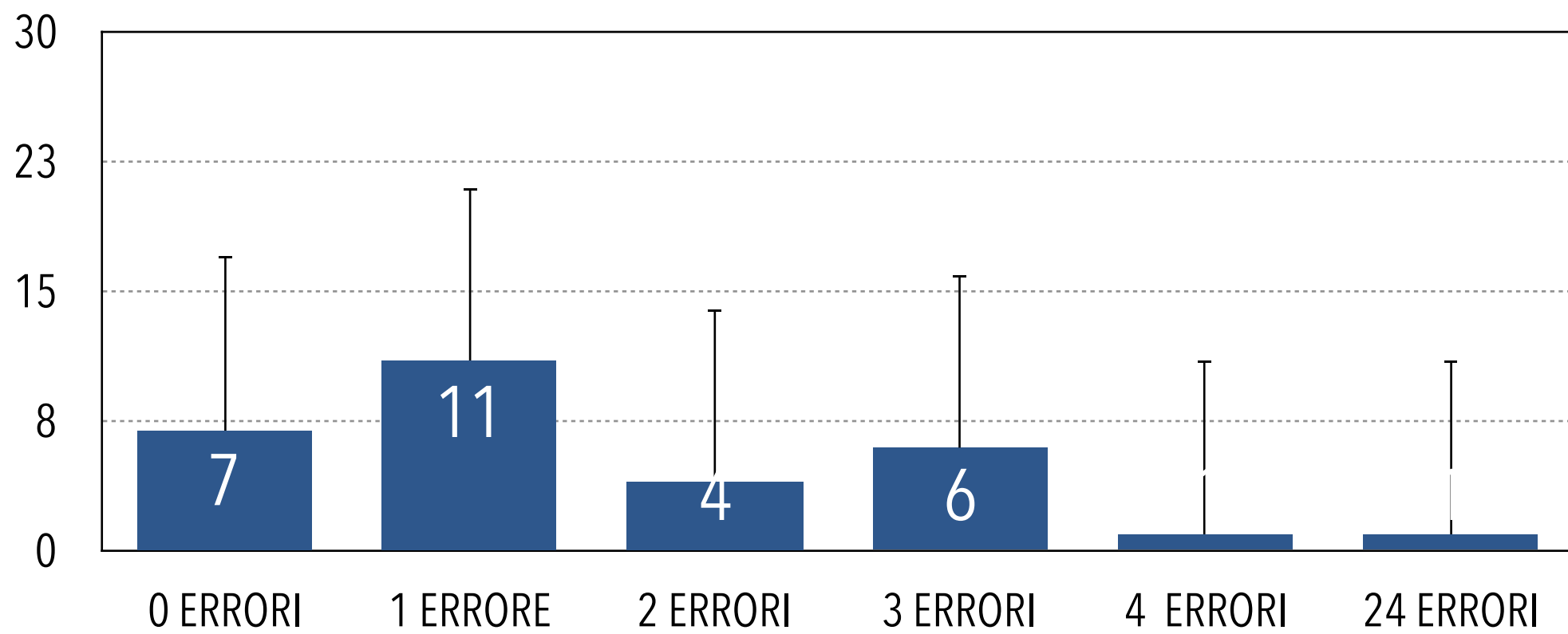
N° DIAGNOSI NON CORRETTE PER CIASCUN CASO DI PAPTEST
(Dispersione diagnostica dei 103 citologi in ogni diagnosi)

[illegible]

RANGE ERRORI 0 - 4

caso 30 : 24 errori

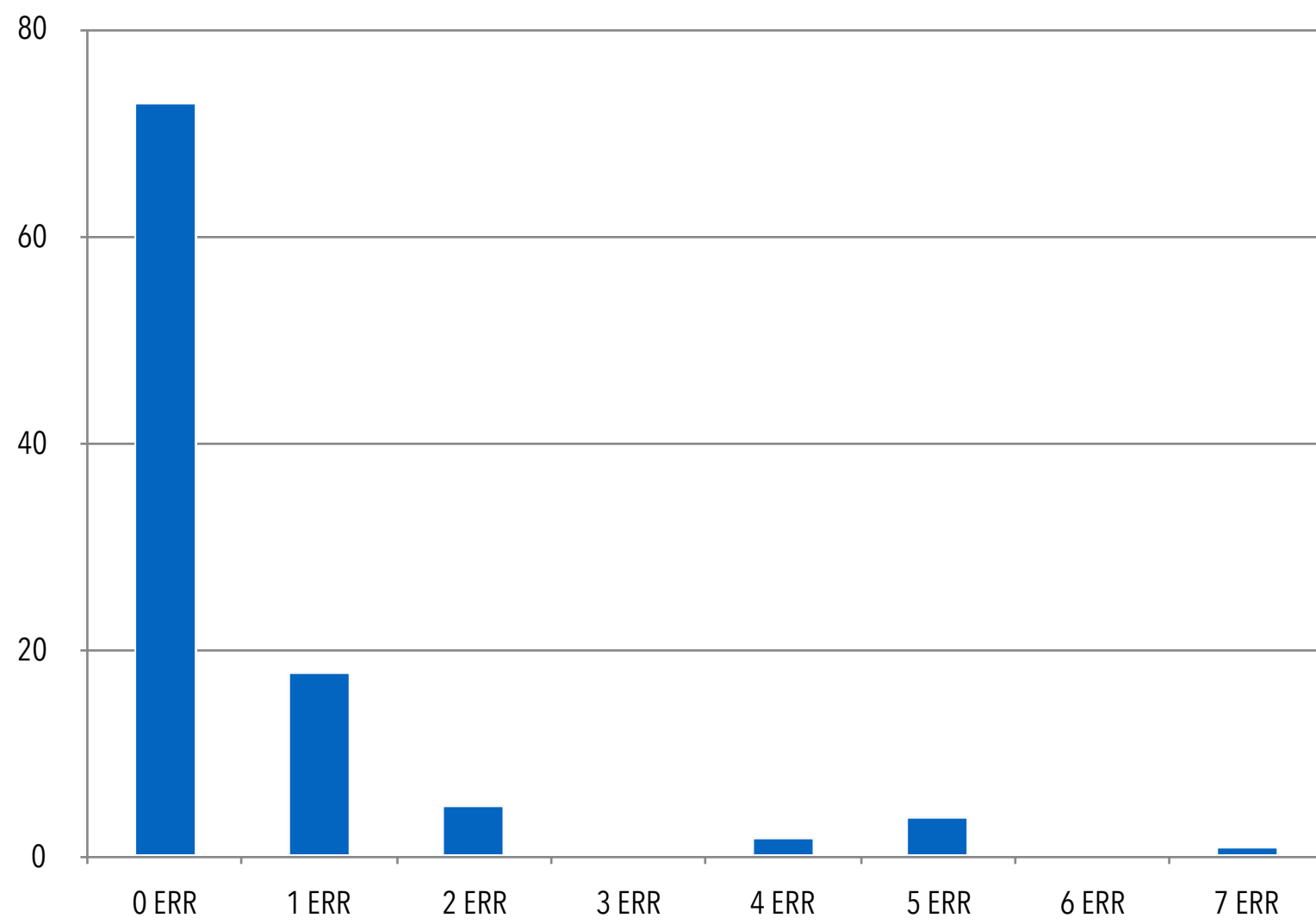
7 CASI CONCORDANZA 100%



N° DIAGNOSI NON CORRETTE PER CIASCUNA UNITA' DIAGNOSTICA
(Dispersione diagnostica di un citologo in 30 diagnosi)

[illegible]

Range di errori : 1 - 7



73 lettori (71%) concordanti

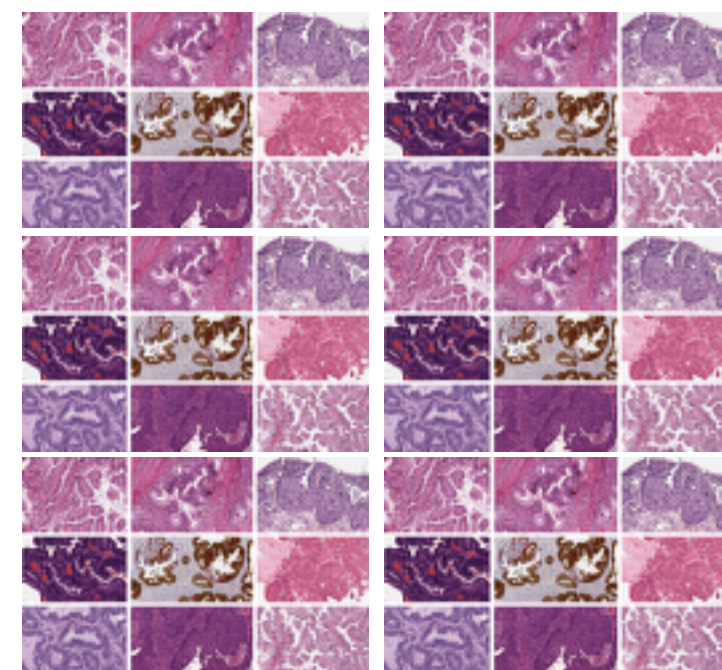
30 lettori (29%) discordanti

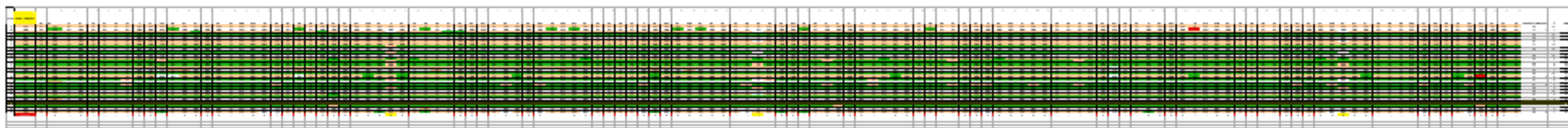
ERRO RI	N.
1	18
2	5
3	0
4	2
5	4
6	0
7	1

91 casi (88,3%) : 0 - 1 errore



30 ISTOLOGIE VIRTUALI
(SCREENING – II° LIVELLO)





24 Centri
33 Lettori
990 Diagnosi

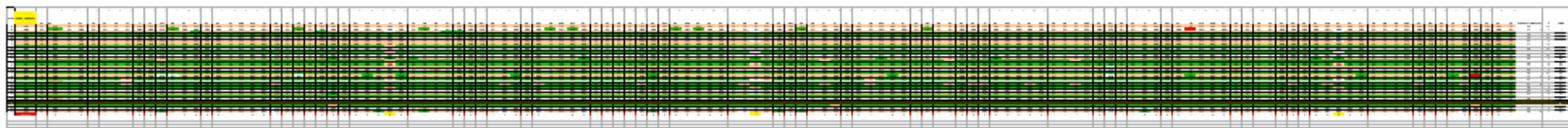
CASE	GOLD STANDARD	1	2	3	4	5
1	LSIL	LSIL	LSIL	LSIL	LSIL	LSIL
2	NEG	NEG	NEG	NEG	NEG	NEG
3	LSIL	LSIL	LSIL	LSIL	LSIL	LSIL
4	NEG	NEG	NEG	NEG	NEG	NEG
5	NEG	NEG	NEG	NEG	NEG	NEG
6	LSIL	LSIL	LSIL	LSIL	LSIL	LSIL
7	LSIL	LSIL	LSIL	LSIL	LSIL	LSIL
8	LSIL	LSIL	LSIL	LSIL	LSIL	LSIL
9	NEG	NEG	NEG	NEG	NEG	NEG
10	NEG	NEG	NEG	NEG	NEG	NEG
11	NEG	NEG	NEG	NEG	NEG	NEG
12	LSIL	LSIL	LSIL	LSIL	LSIL	LSIL
13	LSIL	LSIL	LSIL	LSIL	LSIL	LSIL
14	LSIL	LSIL	LSIL	LSIL	LSIL	LSIL
15	LSIL	LSIL	LSIL	LSIL	LSIL	LSIL
16	NEG	NEG	NEG	NEG	NEG	NEG
17	NEG	NEG	NEG	NEG	NEG	NEG
18	LSIL	LSIL	LSIL	LSIL	LSIL	LSIL
19	LSIL	LSIL	LSIL	LSIL	LSIL	LSIL
20	NEG	NEG	NEG	NEG	NEG	NEG
21	LSIL	LSIL	LSIL	LSIL	LSIL	LSIL
22	LSIL	LSIL	LSIL	LSIL	LSIL	LSIL
23	LSIL	LSIL	LSIL	LSIL	LSIL	LSIL
24	LSIL	LSIL	LSIL	LSIL	LSIL	LSIL
25	LSIL	LSIL	LSIL	LSIL	LSIL	LSIL
26	NEG	NEG	NEG	NEG	NEG	NEG
27	NEG	NEG	NEG	NEG	NEG	NEG
28	LSIL	LSIL	LSIL	LSIL	LSIL	LSIL
29	NEG	NEG	NEG	NEG	NEG	NEG
30	LSIL	LSIL	LSIL	LSIL	LSIL	LSIL
31	LSIL	LSIL	LSIL	LSIL	LSIL	LSIL
32	LSIL	LSIL	LSIL	LSIL	LSIL	LSIL
33	LSIL	LSIL	LSIL	LSIL	LSIL	LSIL
34	LSIL	LSIL	LSIL	LSIL	LSIL	LSIL
35	LSIL	LSIL	LSIL	LSIL	LSIL	LSIL
36	LSIL	LSIL	LSIL	LSIL	LSIL	LSIL
37	LSIL	LSIL	LSIL	LSIL	LSIL	LSIL
38	LSIL	LSIL	LSIL	LSIL	LSIL	LSIL
39	LSIL	LSIL	LSIL	LSIL	LSIL	LSIL
40	LSIL	LSIL	LSIL	LSIL	LSIL	LSIL
41	LSIL	LSIL	LSIL	LSIL	LSIL	LSIL
42	LSIL	LSIL	LSIL	LSIL	LSIL	LSIL
43	LSIL	LSIL	LSIL	LSIL	LSIL	LSIL
44	LSIL	LSIL	LSIL	LSIL	LSIL	LSIL
45	LSIL	LSIL	LSIL	LSIL	LSIL	LSIL
46	LSIL	LSIL	LSIL	LSIL	LSIL	LSIL
47	LSIL	LSIL	LSIL	LSIL	LSIL	LSIL
48	LSIL	LSIL	LSIL	LSIL	LSIL	LSIL
49	LSIL	LSIL	LSIL	LSIL	LSIL	LSIL
50	LSIL	LSIL	LSIL	LSIL	LSIL	LSIL
51	LSIL	LSIL	LSIL	LSIL	LSIL	LSIL
52	LSIL	LSIL	LSIL	LSIL	LSIL	LSIL
53	LSIL	LSIL	LSIL	LSIL	LSIL	LSIL
54	LSIL	LSIL	LSIL	LSIL	LSIL	LSIL
55	LSIL	LSIL	LSIL	LSIL	LSIL	LSIL
56	LSIL	LSIL	LSIL	LSIL	LSIL	LSIL
57	LSIL	LSIL	LSIL	LSIL	LSIL	LSIL
58	LSIL	LSIL	LSIL	LSIL	LSIL	LSIL
59	LSIL	LSIL	LSIL	LSIL	LSIL	LSIL
60	LSIL	LSIL	LSIL	LSIL	LSIL	LSIL
61	LSIL	LSIL	LSIL	LSIL	LSIL	LSIL
62	LSIL	LSIL	LSIL	LSIL	LSIL	LSIL
63	LSIL	LSIL	LSIL	LSIL	LSIL	LSIL
64	LSIL	LSIL	LSIL	LSIL	LSIL	LSIL
65	LSIL	LSIL	LSIL	LSIL	LSIL	LSIL
66	LSIL	LSIL	LSIL	LSIL	LSIL	LSIL
67	LSIL	LSIL	LSIL	LSIL	LSIL	LSIL
68	LSIL	LSIL	LSIL	LSIL	LSIL	LSIL
69	LSIL	LSIL	LSIL	LSIL	LSIL	LSIL
70	LSIL	LSIL	LSIL	LSIL	LSIL	LSIL
71	LSIL	LSIL	LSIL	LSIL	LSIL	LSIL
72	LSIL	LSIL	LSIL	LSIL	LSIL	LSIL
73	LSIL	LSIL	LSIL	LSIL	LSIL	LSIL
74	LSIL	LSIL	LSIL	LSIL	LSIL	LSIL
75	LSIL	LSIL	LSIL	LSIL	LSIL	LSIL
76	LSIL	LSIL	LSIL	LSIL	LSIL	LSIL
77	LSIL	LSIL	LSIL	LSIL	LSIL	LSIL
78	LSIL	LSIL	LSIL	LSIL	LSIL	LSIL
79	LSIL	LSIL	LSIL	LSIL	LSIL	LSIL
80	LSIL	LSIL	LSIL	LSIL	LSIL	LSIL
81	LSIL	LSIL	LSIL	LSIL	LSIL	LSIL
82	LSIL	LSIL	LSIL	LSIL	LSIL	LSIL
83	LSIL	LSIL	LSIL	LSIL	LSIL	LSIL
84	LSIL	LSIL	LSIL	LSIL	LSIL	LSIL
85	LSIL	LSIL	LSIL	LSIL	LSIL	LSIL
86	LSIL	LSIL	LSIL	LSIL	LSIL	LSIL
87	LSIL	LSIL	LSIL	LSIL	LSIL	LSIL
88	LSIL	LSIL	LSIL	LSIL	LSIL	LSIL
89	LSIL	LSIL	LSIL	LSIL	LSIL	LSIL
90	LSIL	LSIL	LSIL	LSIL	LSIL	LSIL
91	LSIL	LSIL	LSIL	LSIL	LSIL	LSIL
92	LSIL	LSIL	LSIL	LSIL	LSIL	LSIL
93	LSIL	LSIL	LSIL	LSIL	LSIL	LSIL
94	LSIL	LSIL	LSIL	LSIL	LSIL	LSIL
95	LSIL	LSIL	LSIL	LSIL	LSIL	LSIL
96	LSIL	LSIL	LSIL	LSIL	LSIL	LSIL
97	LSIL	LSIL	LSIL	LSIL	LSIL	LSIL
98	LSIL	LSIL	LSIL	LSIL	LSIL	LSIL
99	LSIL	LSIL	LSIL	LSIL	LSIL	LSIL
100	LSIL	LSIL	LSIL	LSIL	LSIL	LSIL

☒ 10 NEGATIVI
☒ 9 LSIL
☒ 11 HSIL

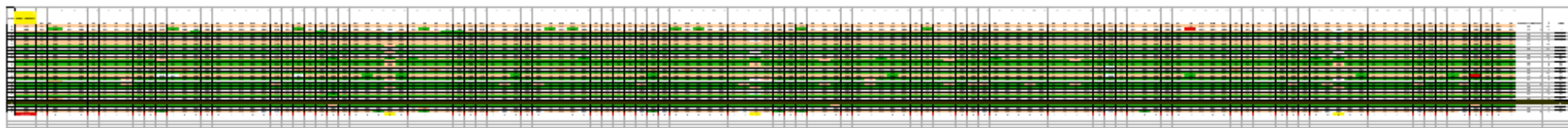
	GOLD STANDARD	CORRETTE	SBAGLIATE	%
Caso 1- Istologia	CIN 1	29	4	88
Caso 2- Istologia	CIN2/3	32	1	97
Caso 3- Istologia	CIN 1	28	5	85
Caso 4- Istologia	neg	14	19	43
Caso 5- Istologia	CIN2/3	33	0	100
Caso 6- Istologia	CIN2/3	33	0	100
Caso 7- Istologia	CIN 1	22	11	67
Caso 8- Istologia	neg	31	2	94
Caso 9- Istologia	CIN2/3	33	0	100
Caso 10- Istologia	neg	14	19	43
Caso 11- Istologia	CIN 1	30	3	91
Caso 12- Istologia	CIN2/3	33	0	100
Caso 13- Istologia	neg	33	0	100
Caso 14- Istologia	CIN 1	23	10	73
Caso 15- Istologia	neg	12	21	37
Caso 16- Istologia	CIN2/3	33	0	100
Caso 17- Istologia	CIN 1	32	1	97
Caso 18- Istologia	neg	27	6	82
Caso 19- Istologia	CIN2/3	33	0	100
Caso 20- Istologia	CIN 1	14	19	43
Caso 21- Istologia	neg	15	18	46
Caso 22- Istologia	CIN2/3	33	0	100
Caso 23- Istologia	CIN 1	31	2	94
Caso 24- Istologia	CIN2/3	33	0	100
Caso 25- Istologia	CIN 1	32	1	97
Caso 26- Istologia	neg	33	0	100
Caso 27- Istologia	neg	31	2	94
Caso 28- Istologia	CIN2/3	33	0	100
Caso 29- Istologia	CIN 1	27	6	82
Caso 30- Istologia	neg	27	6	82

☒ 3 opzioni diagnostiche

☒ diagnosi "inequivocabili"



11 Lettori (33%)
100% Concordanza



22 Lettori (67%)
Discordanza

33 ISTOLOGI vs 30 ISTOLOGIE VIRTUALI vs 990 DIAGNOSI



VISUALE STATISTICA VERSO LA DIAGNOSI

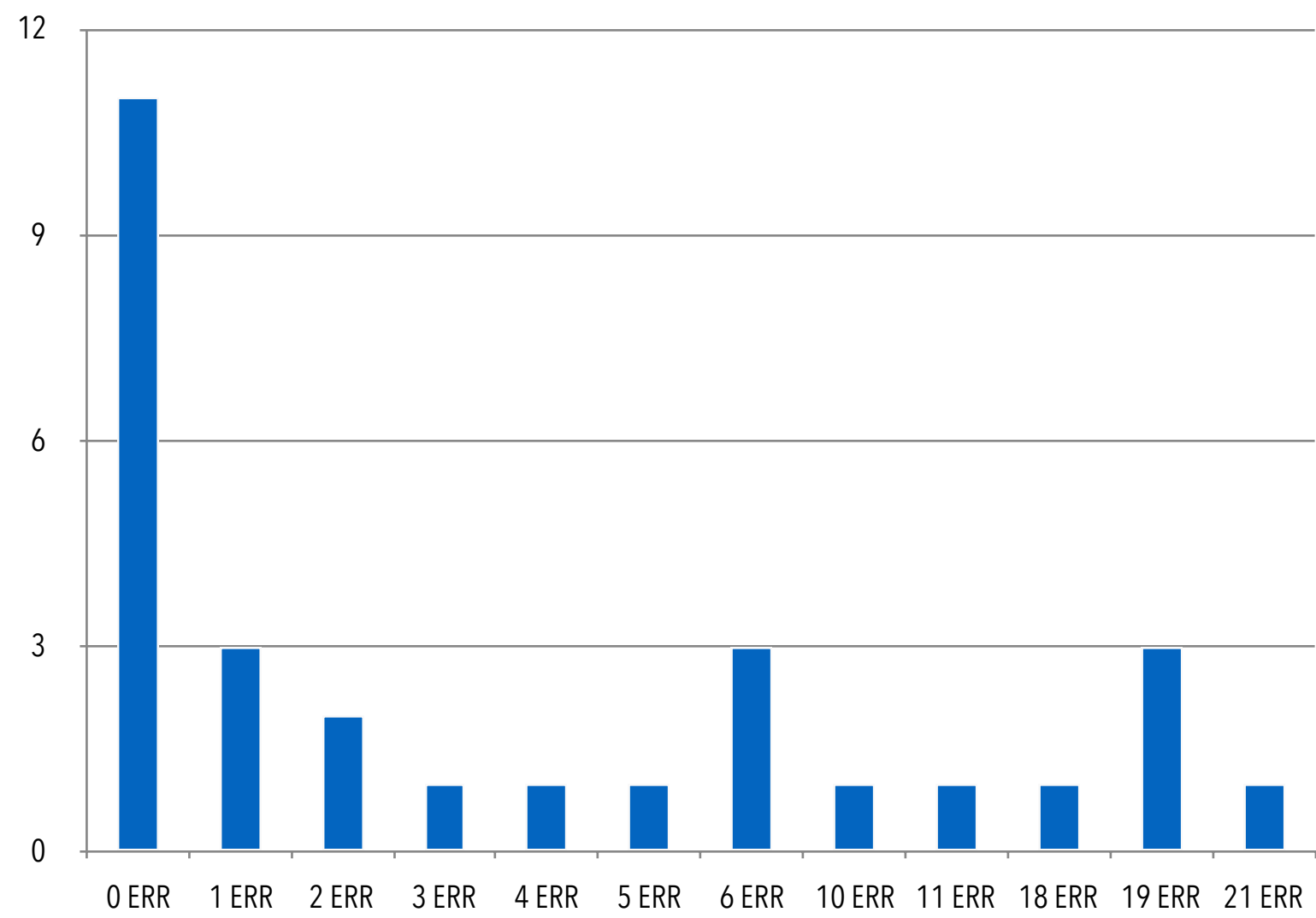
VISUALE STATISTICA VERSO GLI ISTOLOGI

N° DIAGNOSI NON CORRETTE PER CIASCUN CASO ISTOLOGICO
(Dispersione diagnostica dei 33 ISTOLOGICI in ogni diagnosi)

[illegible]

RANGE ERRORI 0 - 21

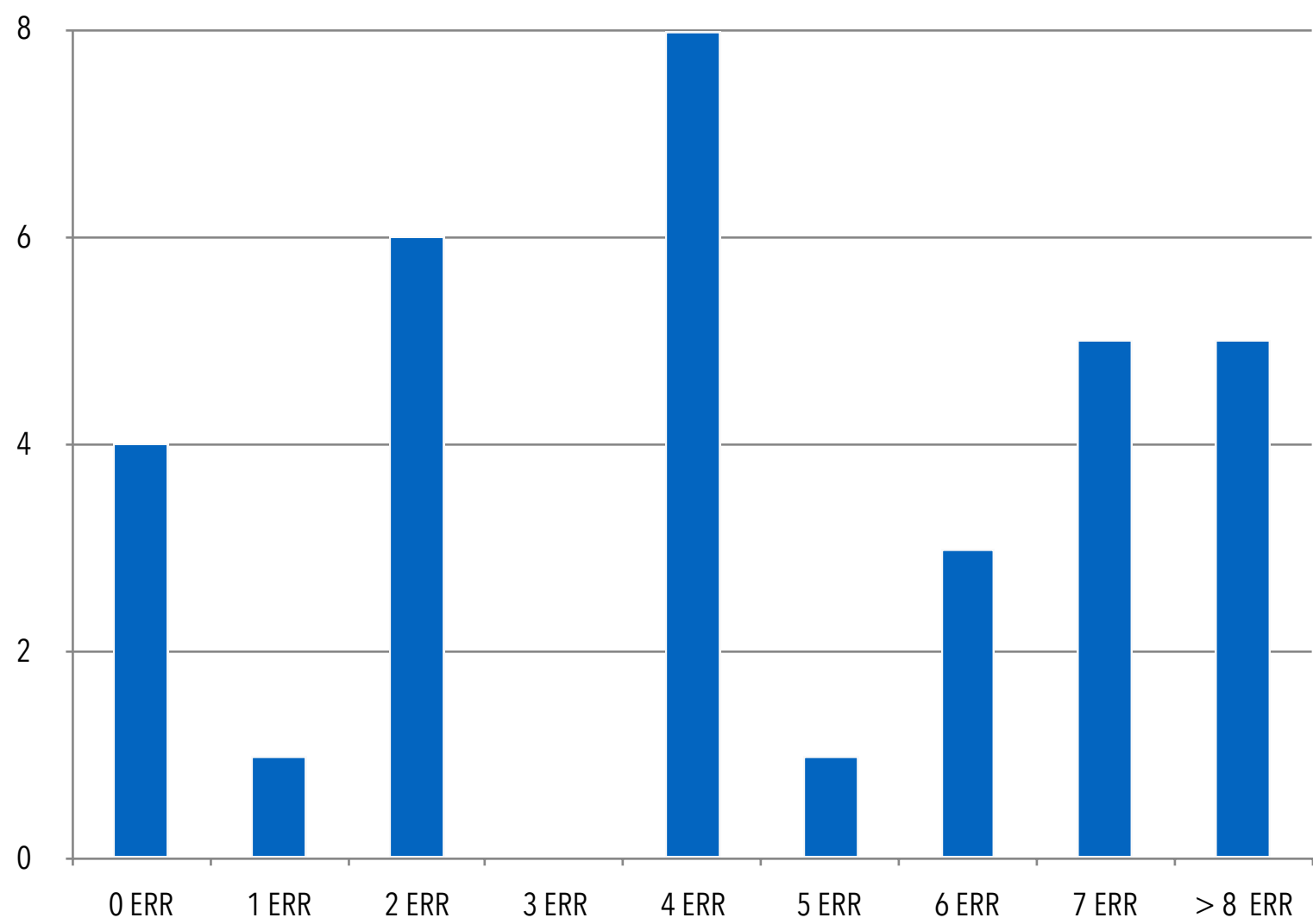
11 CASI CONCORDANZA 100%



N° DIAGNOSI NON CORRETTE PER CIASCUNA UNITA' DIAGNOSTICA
(Dispersione diagnostica di un istologo in 30 diagnosi)

[illegible]

Range di errori : 1 - 13



	GOLD STANDARD	CORRETTE	SBAGLIATE	%
Caso 1- Istologia	CIN 1	29	4	88
Caso 2- Istologia	CIN2/3	32	1	97
Caso 3- Istologia	CIN 1	28	5	85
Caso 4- Istologia	neg	14	19	43
Caso 5- Istologia	CIN2/3	33	0	100
Caso 6- Istologia	CIN2/3	33	0	100
Caso 7- Istologia	CIN 1	22	11	67
Caso 8- Istologia	neg	31	2	94
Caso 9- Istologia	CIN2/3	33	0	100
Caso 10- Istologia	neg	14	19	43
Caso 11- Istologia	CIN 1	30	3	91
Caso 12- Istologia	CIN2/3	33	0	100
Caso 13- Istologia	neg	33	0	100
Caso 14- Istologia	CIN 1	23	10	73
Caso 15- Istologia	neg	12	21	37
Caso 16- Istologia	CIN2/3	33	0	100
Caso 17- Istologia	CIN 1	32	1	97
Caso 18- Istologia	neg	27	6	82
Caso 19- Istologia	CIN2/3	33	0	100
Caso 20- Istologia	CIN 1	14	19	43
Caso 21- Istologia	neg	15	18	46
Caso 22- Istologia	CIN2/3	33	0	100
Caso 23- Istologia	CIN 1	31	2	94
Caso 24- Istologia	CIN2/3	33	0	100
Caso 25- Istologia	CIN 1	32	1	97
Caso 26- Istologia	neg	33	0	100
Caso 27- Istologia	neg	31	2	94
Caso 28- Istologia	CIN2/3	33	0	100
Caso 29- Istologia	CIN 1	27	6	82
Caso 30- Istologia	neg	27	6	82



PAP TEST
Test Diagnostico 2° livello



12 CASI

CASI CITO - ISTOLOGICI CON IHC

(PROBLEMATICI / II° LIVELLO)

LETTURA PER CENTRO



La regola sembra ... che non esistano una regole



DIAGNOSI FALSE NEGATIVE

The Bethesda System for Reporting Cervical Cytology

Definitions, Criteria,
and Explanatory Notes

Third Edition

Ritu Nayar
David C. Wilbur
Editors

 Springer



Hanno detto che
questo libro avrebbe
cambiato la mia vita.
E' da mesi sul comodino
ed è ancora tutto
uguale.

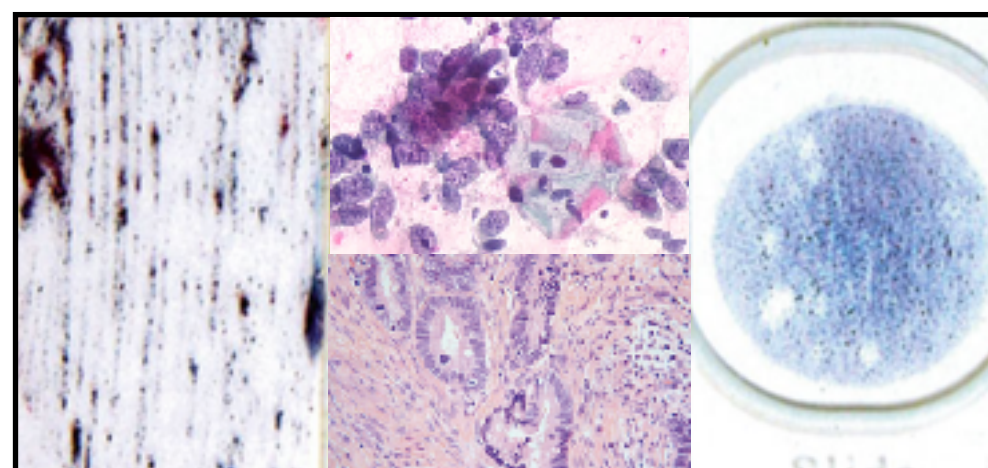
Registro Tumori del Veneto
Gruppo regionale veneto dei patologi dello screening citologico



CONFRONTO INTERISTITUZIONALE IN PATOLOGIA CERVICO-VAGINALE DA SCREENING

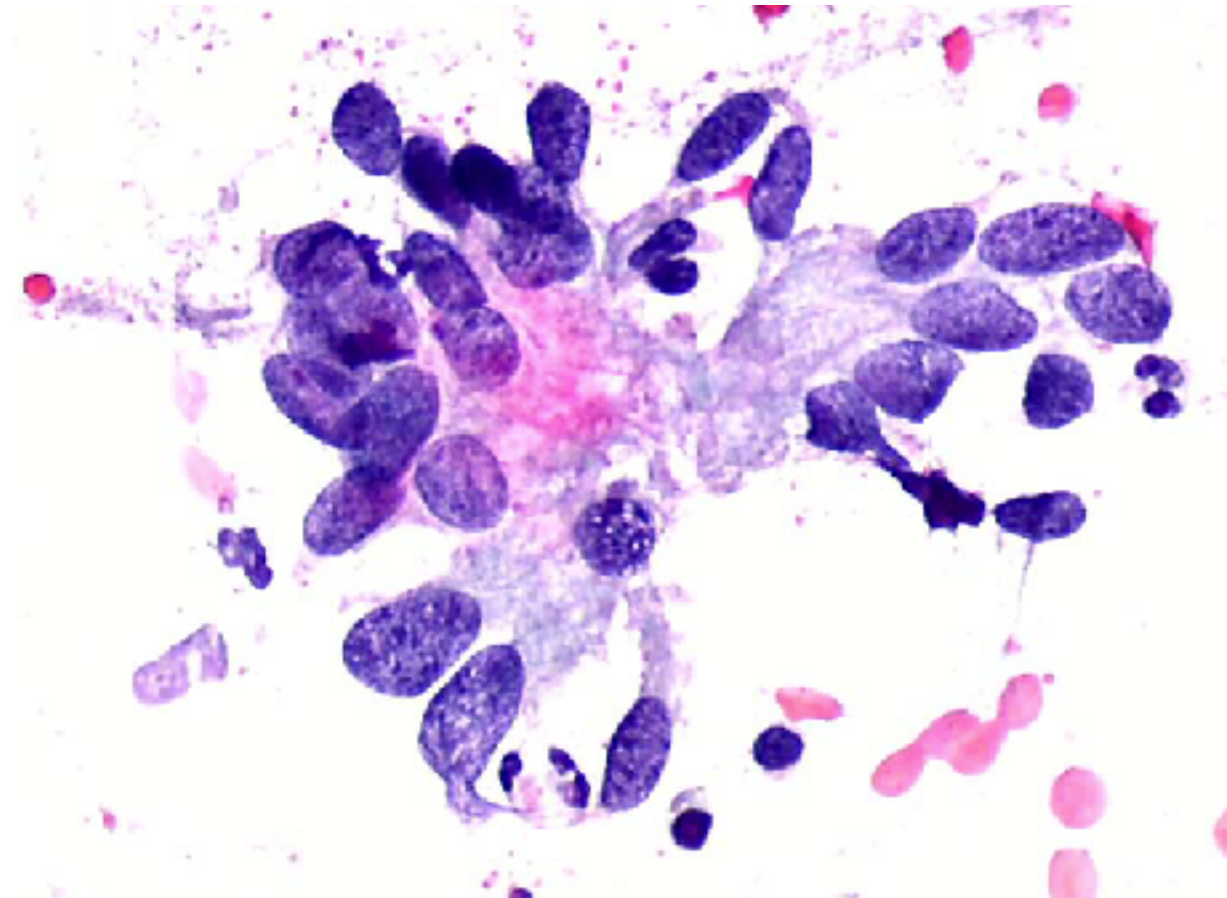
Rovigo, 9 novembre 2017

Aula Magna Cittadella Socio-Sanitaria



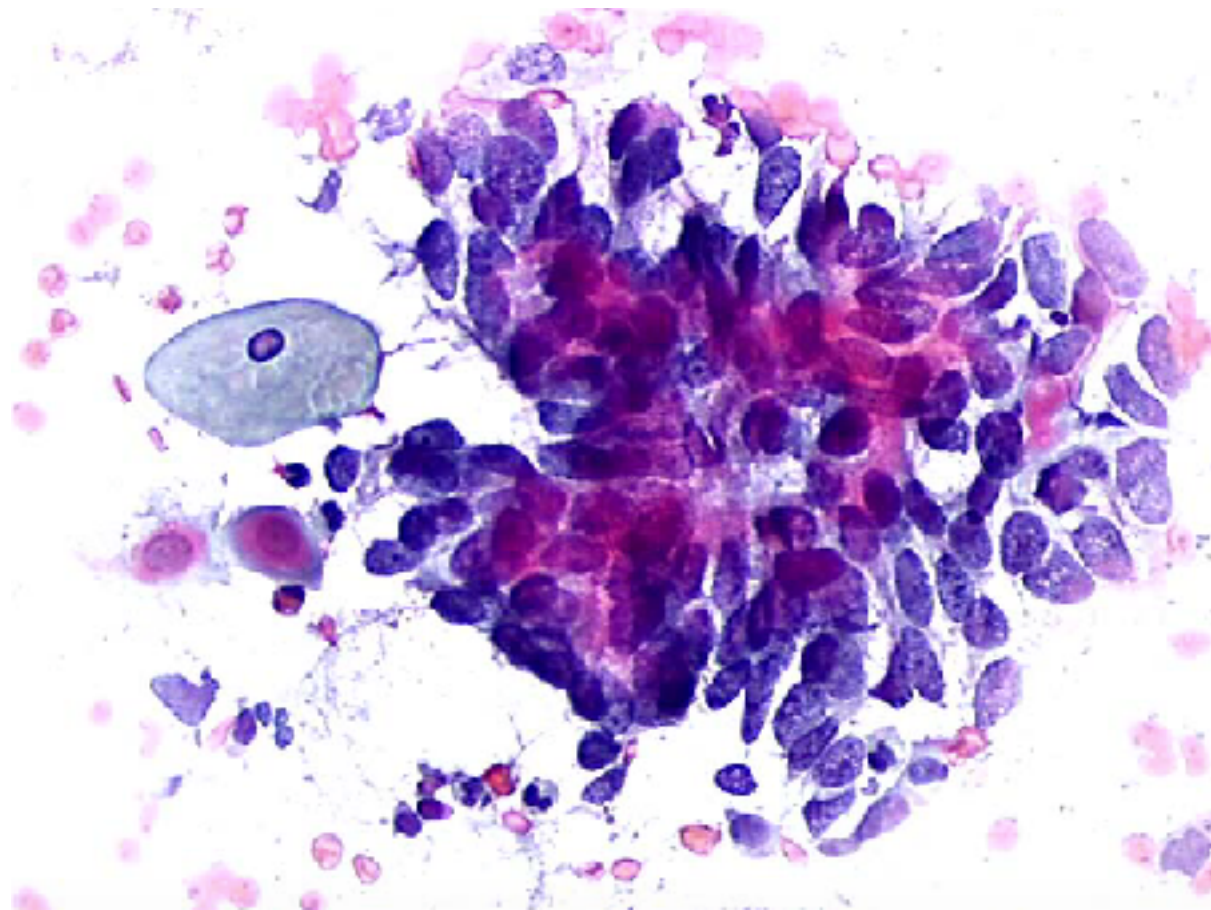
IL PATOLOGO E LE LESIONI GHIANDOLARI DELLA CERVICE UTERINA

Duilio Della Libera



Università Pennsylvania (1936 - 1967) : 6.1 % adenocarcinoma endocervicale

Adenocarcinoma endocervicale : 20 - 25%



La quasi totalità dei SCC della cervice è associata ad infezione da HPV (hrHPV)

Adenocarcinoma endocervicale associato a hrHPV nel 90% dei casi (forme usuali)

Fra le preneoplastiche endocervicali, l'AIS è positivo per hrHPV nel 100%

HPV 18 e HPV45 prevalgono a HPV16 nelle forme in situ e invasive



Aggiornamento Linee Guida Regionali

TAKE HOME MESSAGE



Interazione fra patologo/citologo, biologo molecolare e ginecologo/colposcopista
Gruppi Multidisciplinari (Cervix Team)

Tecniche e linee guida predefinite e concordate

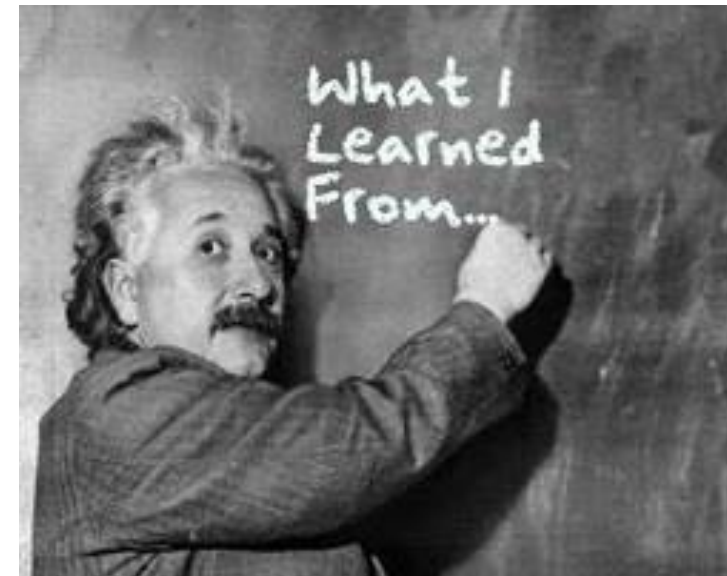
Livello clinico-decisionale condiviso (cultura, linguaggio comune)

Controlli di qualità (2° opinione, VEQ esterne)

Preparati digitali (il vetrino digitale)



TAKE HOME MESSAGE



PIU' SI INVESTE NELLA TECNOLOGIA (ANALISI MATERIALE GENOMICO VIRALE, AUTOMATISMO) PIU' BISOGNA RIVALUTARE E RECUPERARE LA MORFOLOGIA

VALORE DELL'AGGIORNAMENTO / FORMAZIONE
POLO FORMATIVO DI RIFERIMENTO



Grazie

L. Lisato, P. Rossi

Gruppo coordinamento PAP

C. Fedato, A. Montaguti



Grazie per l'attenzione ...

